

# Vienna Symphonic Library

## MIDI Router V1

### Copyright Notice

1

Information in this document, including URL and other Web site references is subject to change without notice. Without limiting the rights under copyright, no part of this document may be reproduced, stored in or introduced into a retrieval system, or transmitted in any form, or by any means, or for any purpose, without the express written permission of the Vienna Symphonic Library GmbH.

Vienna Symphonic Library may have patents, patent applications, trademarks, or other intellectual property rights covering subject matter in this document. Except as expressly provided in any written license agreement from Vienna Symphonic Library, the furnishing of this document does not give you any license to these patents, trademarks, copyrights or any intellectual property.

Copyright © 2004 All rights reserved.  
Vienna Symphonic Library GmbH  
Draschestrasse 89, A-1230 Wien, Austria  
E-mail: office@vsl.co.at

---

### Overview

The VSL MIDI Router is a helpful application for everybody who wants to use GigaStudio AND sequencer on a single computer. The VSL MIDI Router generates virtual MIDI Ports and is optimized to fit the Performance Tool.

To prevent feedback loops and application lock-ups, single applications will be unable to open input-output port pairs. You cannot route MIDI ports within the same application (thus, the InPorts can only be seen by the Vienna Symphonic Library Performance Tool!).

This application will work under Windows 2k and XP (NOT 95, 98, ME).

## Installation

Simply click on midiroutervsl1-i.exe, the installer will guide you through the installation process.

The name of the installed driver is “VSL Midi Router 1.0 RC1”.

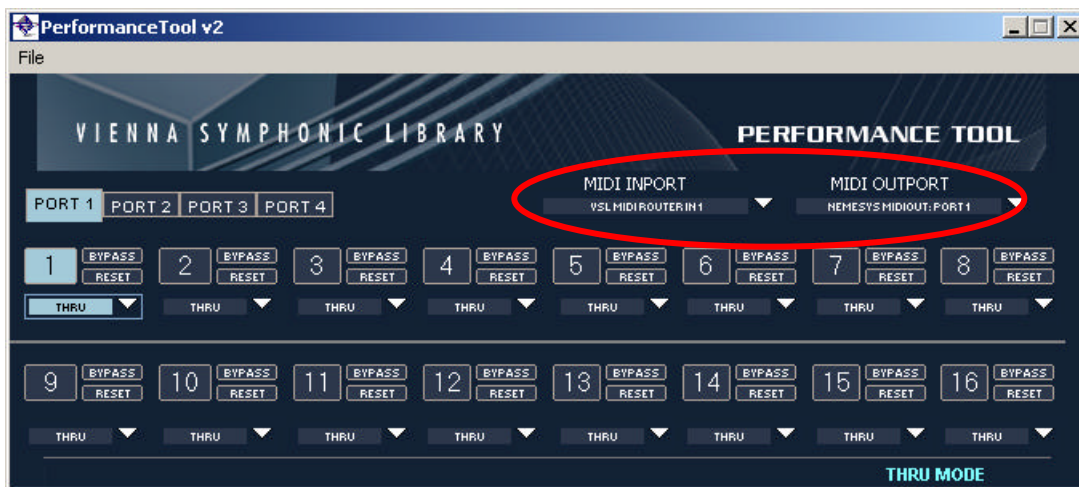
Here is an example for a typical setup on one workstation:

2

**Sequencer:** MIDI Input: select MIDI Interface IN  
MIDI Output: select VSL MIDI Router Out 1

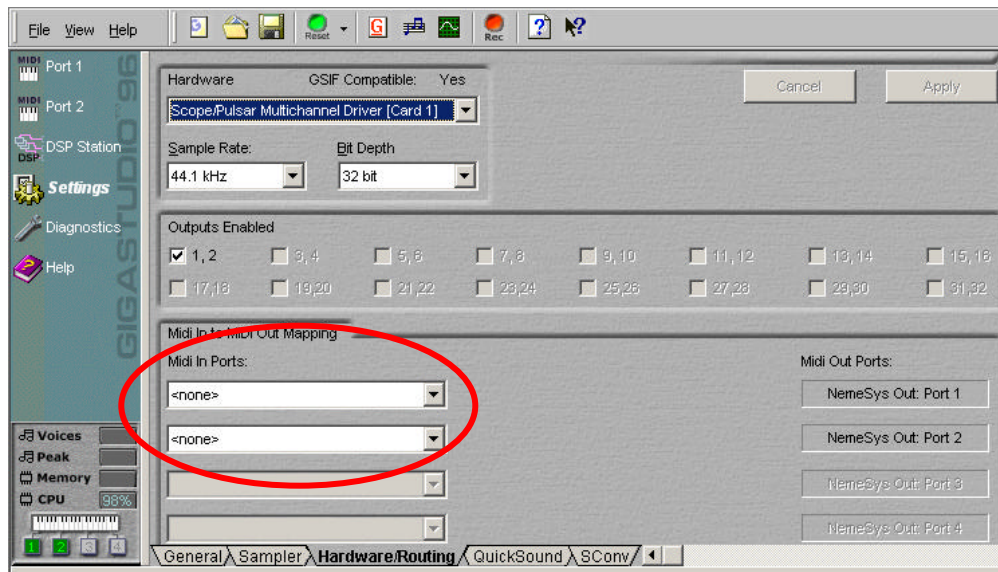


**PerformanceTool:** select MIDI INPORT: VSL MIDI Router In 1  
select MIDI OUTPORT: Nemesis MIDI Out Port 1



## GigaStudio

**IMPORTANT:** disable all InPorts in GigaStudio! To do so, select Gigastudio “Settings – Hardware/Routing” and set all your Midi In Ports to “none”. Then click the “Apply” button!



3

These are the names of the additional ports you get (as they appear in dropdown menus):

InPorts: VSL MIDI Router In 1–4  
OutPorts: VSL MIDI Router Out 1–4

Enjoy!  
Your Vienna Symphonic Library Team